

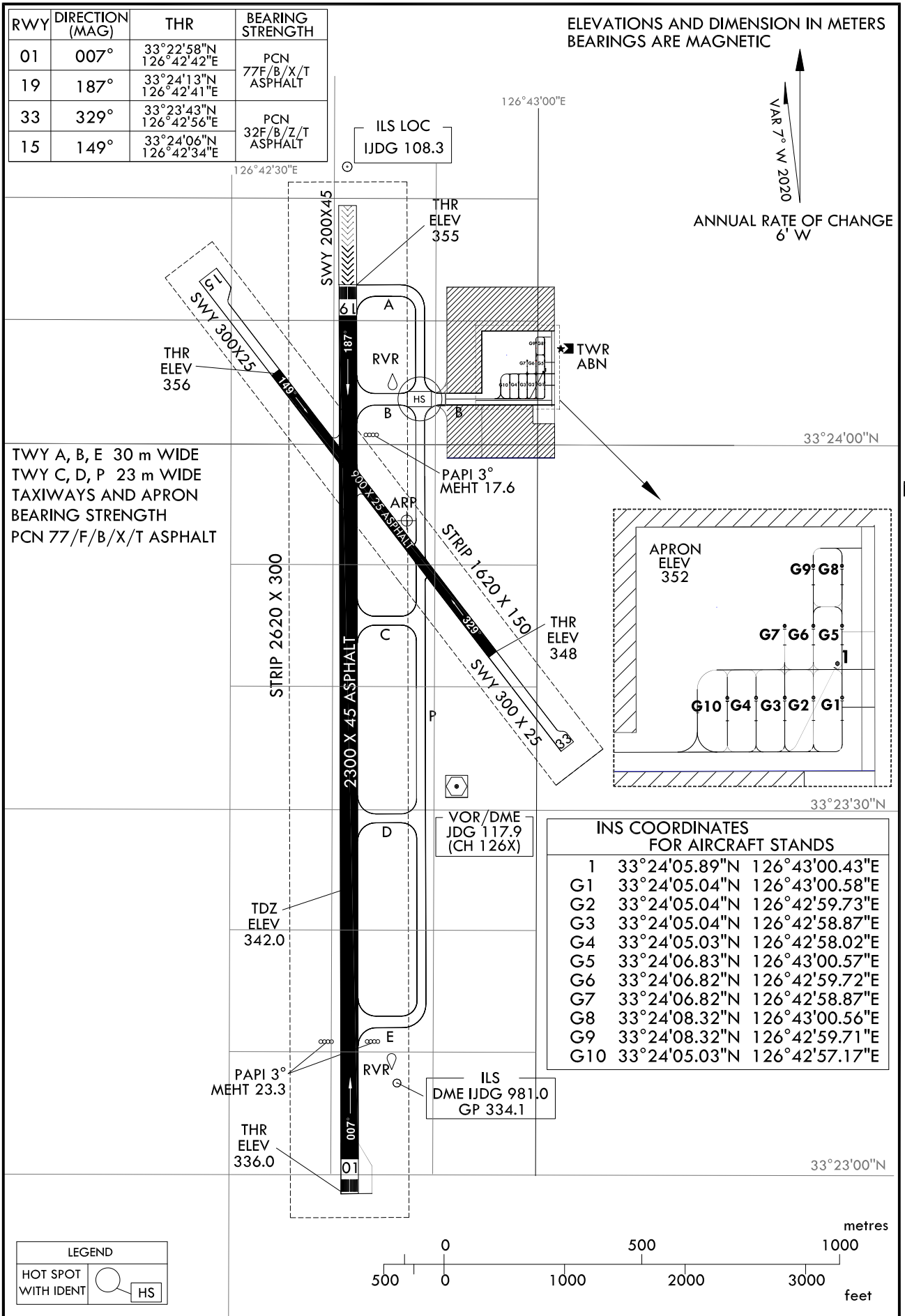
AERODROME CHART - ICAO

33°23'54"N
126°42'47"E

ELEV 358 m

TWR 124.35
GND 121.95

JEJU / Jeongseok

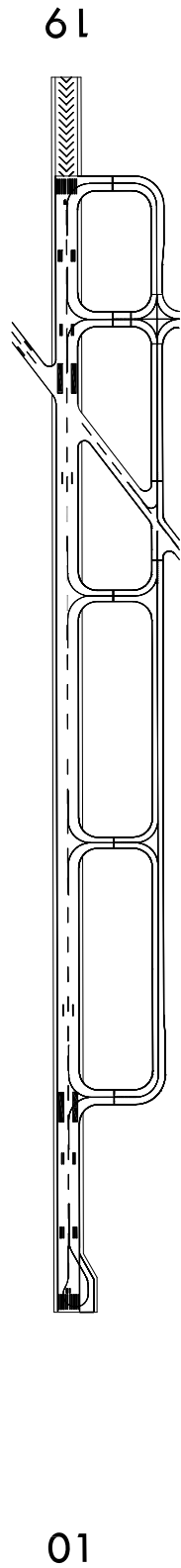


Change : Information of MEHT(16.9 → 17.6).

LIGHTING AND
MARKING CHART

JEJU / Jeongseok

MARKING AIDS RWY 01/19 AND EXIT TWY



LIGHTING AIDS RWY 01/19 AND EXIT TWY

